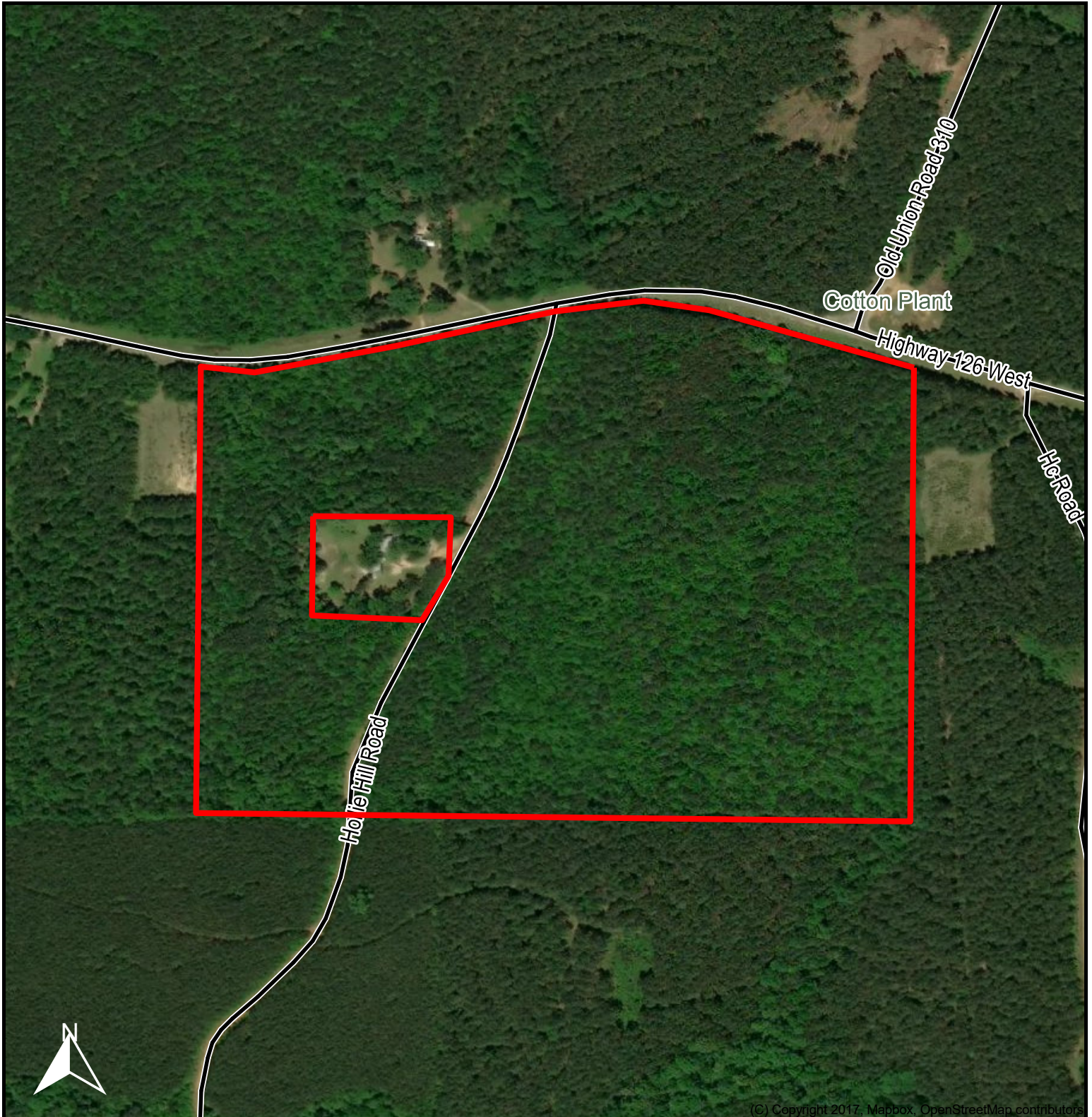




56 +/- Acres / Caldwell Parish, LA
Section 16, Township 13 North, Range 2 East

Kevin Daugherty
Cell: 318-312-1240
kevin@forestland.com
www.forestland.com



(C) Copyright 2017, Mapbox, OpenStreetMap contributors

neither this broker nor owners make any guarantee, warranty or representation as to correctness of any data or descriptions and the accuracy of such statements. The correctness and / or accuracy of any and all statements should be determined through independent investigation made by the prospective purchaser.

Forestland Associates, LLC
Glen Stephens - Broker
161 Robinhood Road
Dry Prong, LA 71423
318 448 1594